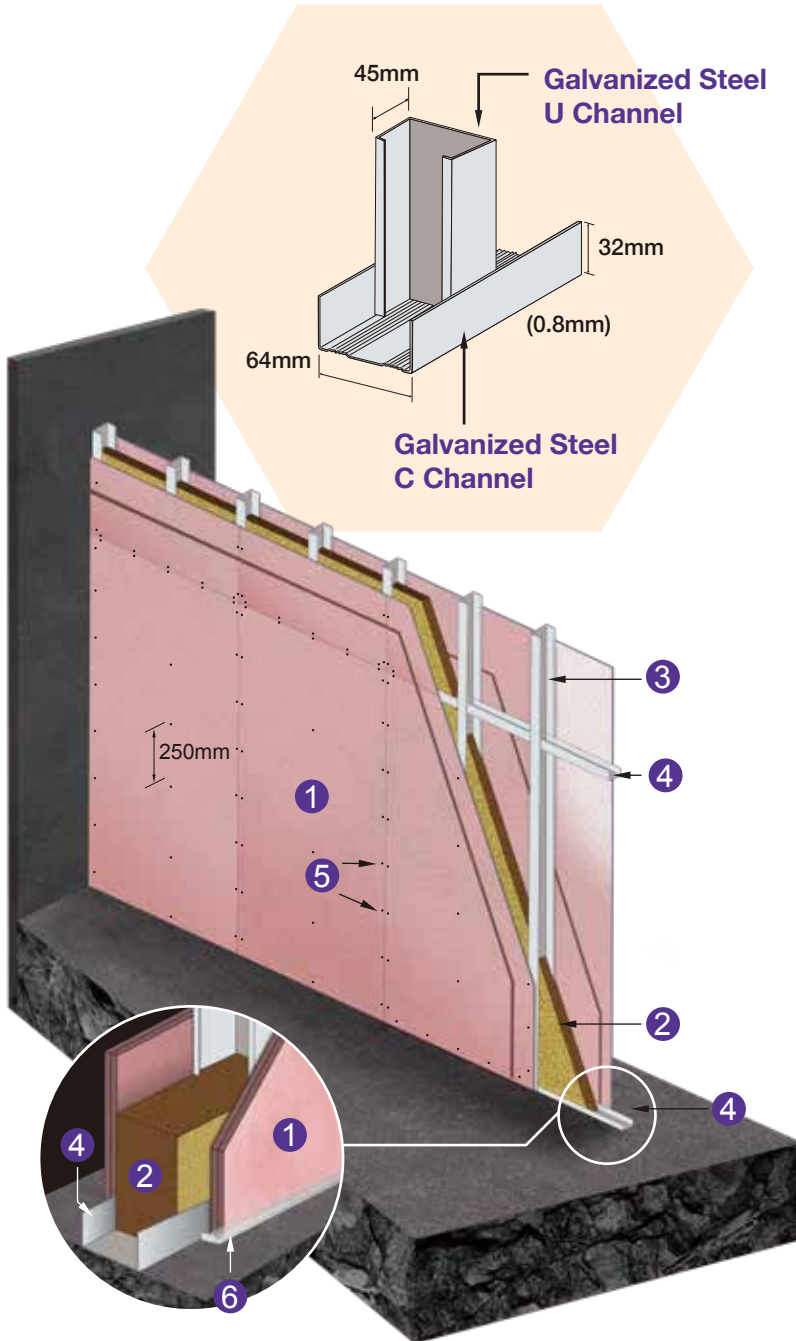


# BNBM Fire Rated Gypsum Board Partition Systems

## 2-hours fire Rated Gypsum Board Partition (12mm)



Fire resistance	FRL	-/132/114
	Standard	BS 476: Part 20: 1987 BS 476: Part 22: 1987
	Approval	R05K02B RED
Assessment	FRL	-/120/120
	Approval	R17K17 - 1A_Issue 1
	Rock Wool	60mm X 100kg/m <sup>3</sup>
	Maximum height	Up To 6m
	Partition thickness	112mm-148mm
Acoustic	Partition length Standard	Unlimited
	#STC	STC - 53
	Standard	ASTM E 90 ASTM E 413-87
	Predicted assessment	ATS 05-005-RP004 (ATSL)
Physical Performance		EN 520 BS 476: Part 4, 6 & 7

- ① Two layers of 12mm thick BNBM (fire resistant Gypsum plasterboard)
- ② BNS Rock wool 60mm x 100kg/m<sup>3</sup>
- ③ 64mm x 45mm x 0.8mm thick Galvanized Steel U Channel at nominal 610mm by 1220mm centres
- ④ 64mm x 32mm x 0.8mm thick Galvanized Steel C Channel
- ⑤ Self-tapping screws at 250mm centres
- ⑥ Fire Sealant

### Sizes of studs for the proposed height of partition boards wall systems

Height up to	Stud sizes (D×F×T)	Studs spacing	Expansion allowance	
3.0m < Height	4.0m	64×45 × 0.8mm	600mm/ c/c	40mm
4.0m < Height	4.5m	75×50 × 1.2mm	600mm/ c/c	45mm
4.5m < Height	5.5m	100×40 × 1.2mm	600mm/ c/c	55mm
5.5m < Height	6.0m	75×50 × 1.5mm	600mm/ c/c	60mm